

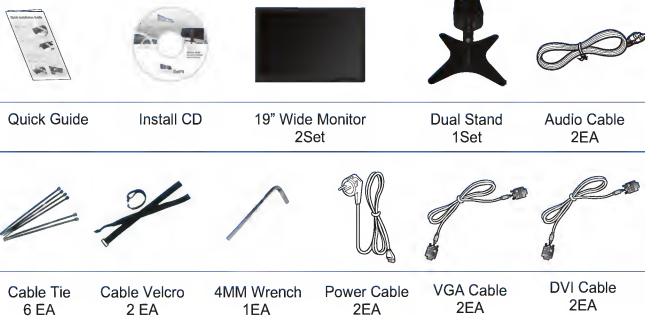
Quick Installation Guide

DoubleSight™ DS-1900WA DUAL LCD MONITOR



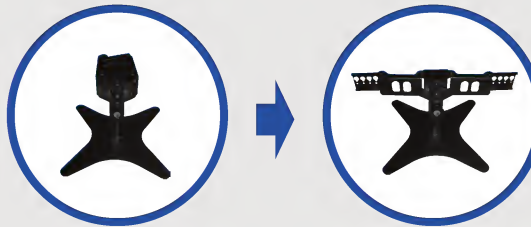
Components

- ※ Check if all the components are included in the package. Contact your sales representative if any components are missing.
- ※ Contact the sales outlet if you wish to purchase optional accessories.
- ※ Actual components may look different from the pictures below.



STEP 1 Setting up the Flex Stand and Monitors

1. Remove all Accessory Components from the carton and set aside.
2. Remove Monitors from carton and set aside on flat level surface.
3. Remove the assembled Flex Stand from the carton. Set the Flex Stand on a flat level surface and spread the stand arm supports outward as shown in the picture:

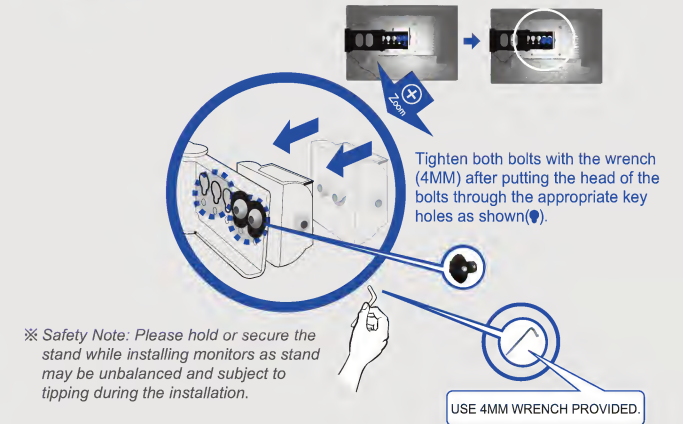


4. Locate the VESA brackets and bolts on the back of each monitor. Locate the key hole slots at the end of each arm support (left and right). To install the monitors, slide the head of each bolt into the key hole slots and tighten.



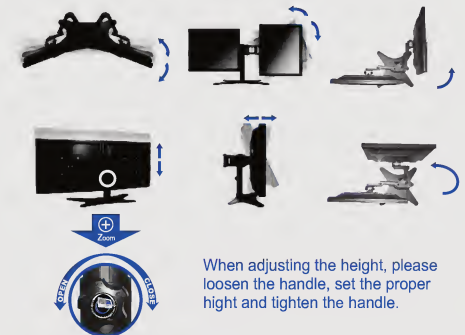
Installation Note: You can adjust your monitors left > right by selecting different sets of key holes on the arm supports.

STEP 1 (continued)



5. Set monitor Viewing Angles

You can now adjust the monitors to your preferred viewing angles. Both monitors are individually adjustable for tilt, pivot and swivel. The set adjusts together for height.



- ※ Note – left monitor moves in forward angles only.
- ※ Safety Note – do not force monitors into position as this may damage panels.

STEP 2 Component Names & Functions

Front of the DS-1900WA



- ① Menu /Enter: Brings up the OSD Menu
- ② Down: Move with in the OSD Menu or adjust values (Down)
- ③ Up: Move with in the OSD Menu or adjust values (Up)
- ④ EXIT: Exit from OSD Menu/Automatic adjustment for monitor setting to optimal
- ⑤ ⏻: Turns the power ON/OFF
- ⑥ Power Indicator: Power status LED

Normal(ON)	Green
OFF	Black
Energy Saving	Green flash
Cable not Connected	Green flash

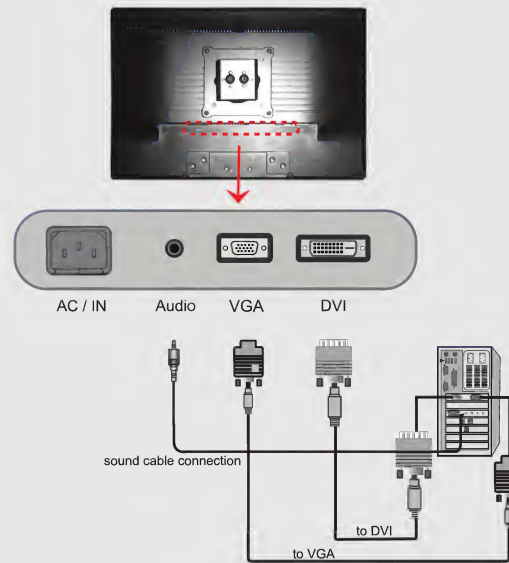
Rear of the DS-1900WA



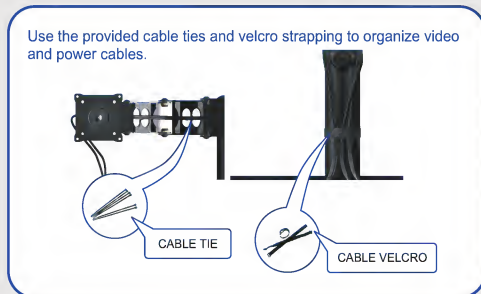
- ① AC IN
- ② AUDIO
- ③ VGA
- ④ DVI

STEP 3 Cable Management & Connection

Cable Connection



Cable Management



Flex Stand Accessories

P/N	Product Description/Product Use
DS-CLMP1	Desk Clamp, Base Style
	Replaces Stand Base, Use to secure Flex Stand in place at the edge of a desk or counter top.
DS-CLMP2	Desk Clamp, Vise Style
	Installs over Stand Base, Use to secure Flex Stand in place at the edge of a desk or counter top.
DS-GRMT	Grommet Base
	Replaces Stand Base, Use to secure Flex Stand in place anywhere on a desk or counter top.
DS-EXT3	3" Height Pole Extension
	Use to increase the pole height for users who require more height.
DS-VS200	200mm x 100mm VESA Conversion Bracket
	Use when installing monitors which have a 200mm x 100mm VESA hole pattern so they fit the standard brackets.
Additional Accessory Product information is available at www.DoubleSight.com	